



IMMUNO PROBE CO., LTD.

ISO 13485 certification



company profile

Name : Immuno Probe Co. Ltd.

Established : November 7, 1986

Capital : 1 0,000,000 yen

President : Hiroshi Nomura

Employees : 20

**Head Office : 1331-3, Kamagata, Ranzan-machi,
Hiki-gun, Saitama, 355-0225,
JAPAN**

**Contact : TEL: +81-493-62-6923
FAX: +81-493-62-9477
info@immuno-probe.com**

Company History

1986年～

- 1986 Establish Immuno Probe Co., Ltd. in Shiga, Ranzan-machi, Hiki-gun, Saitama for the purpose of preparation of polyclonal antibodies for latex-immune assay
- 1988 Start preparation of monoclonal antibodies
- 1994 Relocate the facilities in Kamagata, Ranzan-machi, Hiki-gun, Saitama, and start safety testing and pharmacological test
- 2006 **Obtain ISO 13485 certification**
- 2008 **Obtain Medicinal Chemical Manufacturer License**
- 2011 Submission to American Association for Clinical Chemistry (AACC)

Join government-financed aid project for cooperation between hospitals and private companies for one year

Join government-financed aid project for medical device development /improvement for three years

Company History_(continued) ~2018年

2012 Start contracted manufacture for in-vitro diagnostic drug medicine

Join the Saitama prefecture-project of medical manufacturing industry for three years

2013 Conduct Saitama prefecture-financed aid project for next-generation industry entry for one year

Put up a display booth in Medica (Germany)

2014 **Obtain Second Class Manufacturing and Distribution License**

Conduct manufacturing, trade, and service innovation business for small companies for one year

2015 Launch *in-vitro* diagnostic medicine **IP line Duo 「Noro/Rota」**

Quality Policy

- 1. An approach to quality improvement and customer satisfaction improvement regarding our product lines and their service**
- 2. Validate the effectiveness of quality management system periodically, and improve it continuously**

Mission

~From raw materials to in-vitro diagnostic~

We aim for the following :

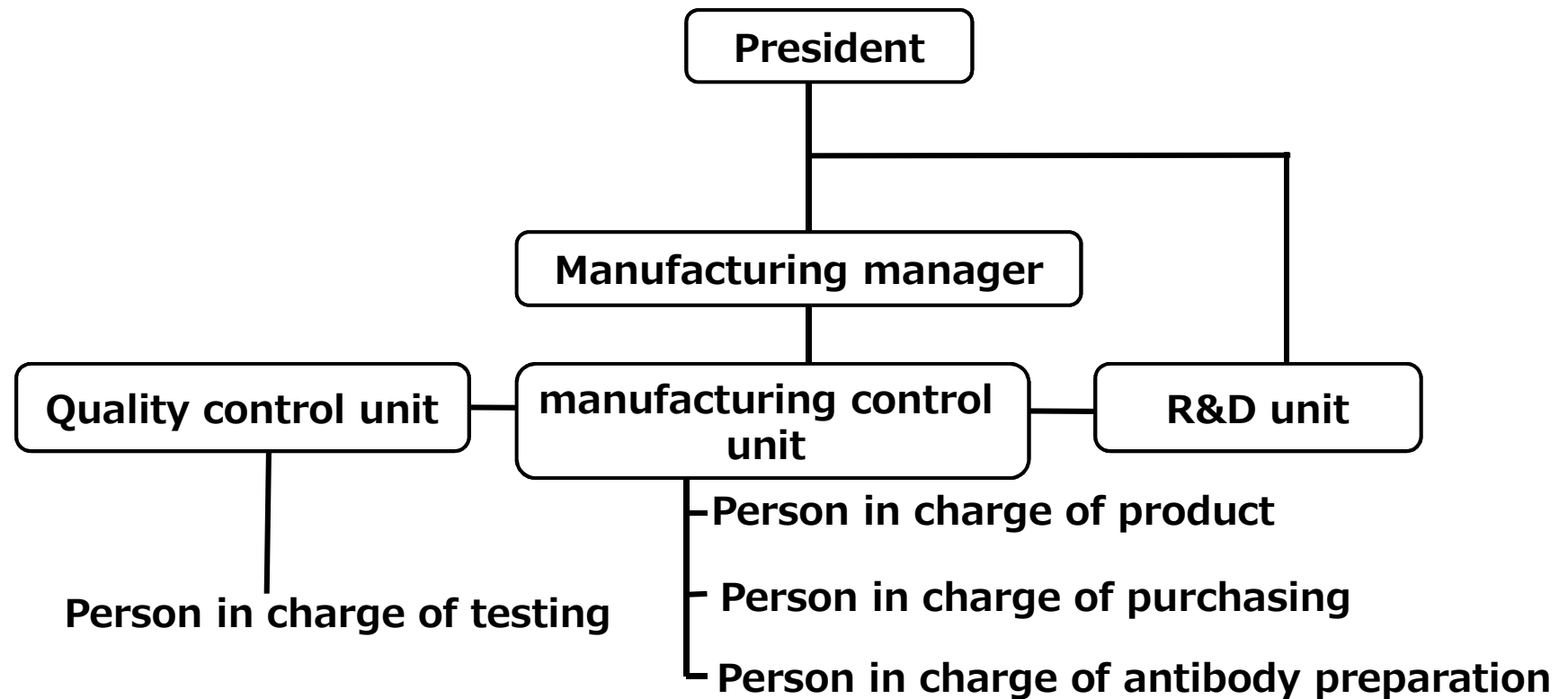
Preparation of better antibodies

Development of better in-vitro diagnostic

Introduction of innovative technology

Characteristic manufacturing technology

Company Structure



Business lineup

R&D and Production of in-vitro diagnostic medicine

Preparation of poly – and mono-clonal antibodies

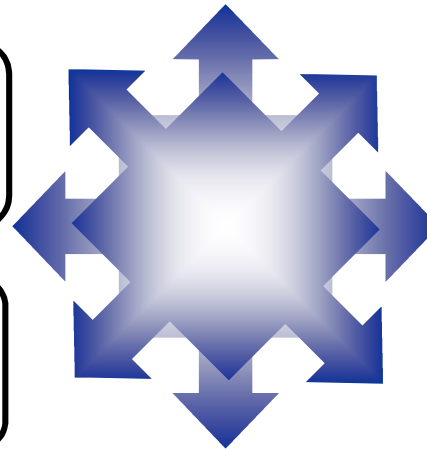
Cultivation of recombinant protein

Preparation and Sales of antibodies

government-financed aid project for medical device development

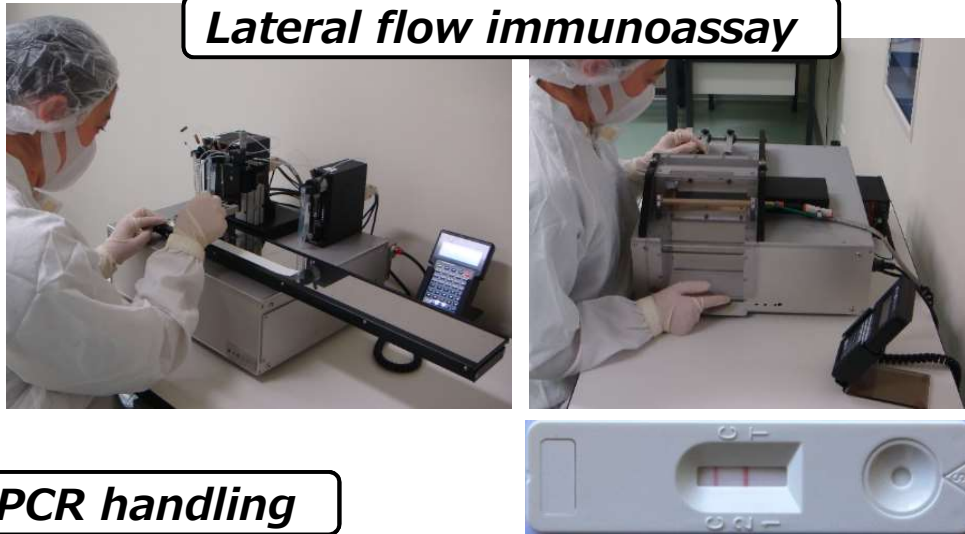
Project between industry and academia

Collaboration with university



Technology

Lateral flow immunoassay



Cell culture



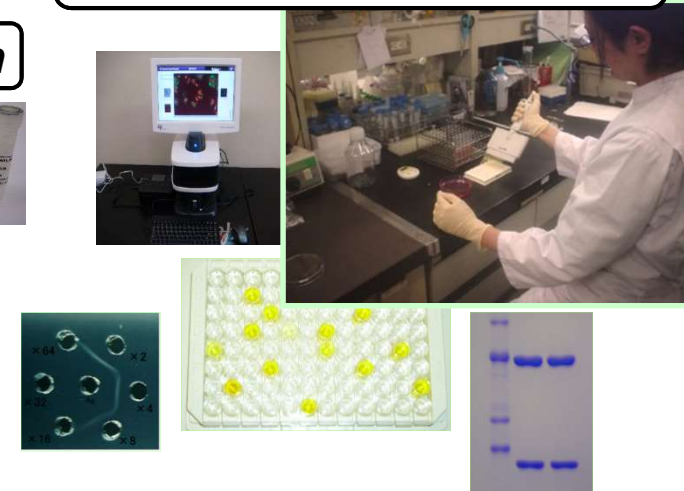
PCR handling



Purification of protein



Various analysis methods



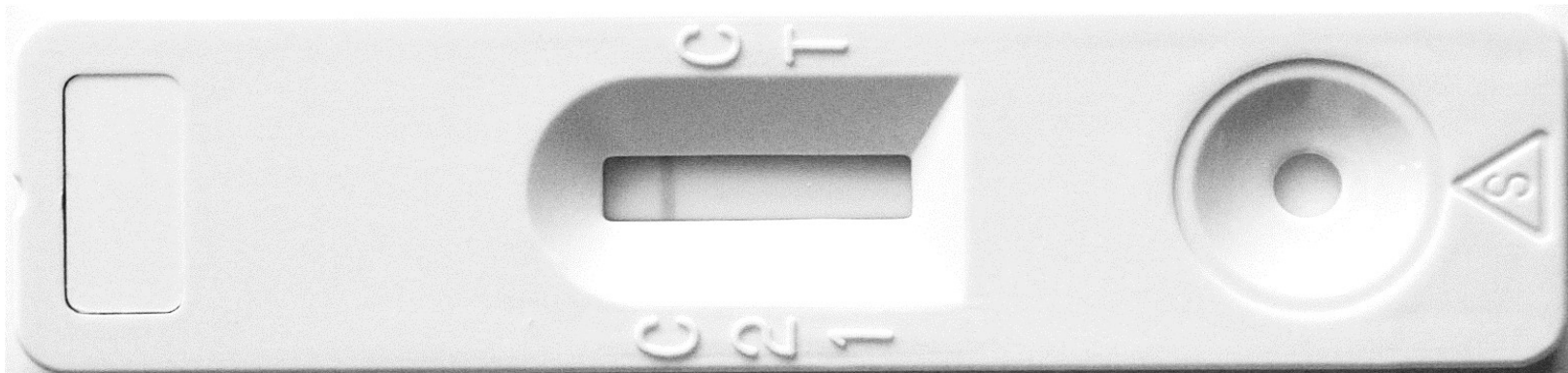
Product line

in-vitro diagnostic medicine:

Lateral flow immunoassay

- ***Noro antigen detection kit***
- ***Mycobacterium antigen detection kit***
- ***Simultaneous detection kit of Noro/Rota antigens***

Supply of poly- and mono-clonal antibodies





Thank you for your attention.